

ALUMINUM TANKS

When space or size is an issue, we can custom build you an aluminum tank for oil, water, fuel or just a breather tank. All tanks are engineered to give top performance and very high quality craftsmanship with internal baffling, returns and feeds, all the correct sizes and methods. The fully tig welded tanks comes complete w/ VPRC logo lid and all O-Ring bosses in place.

- | | |
|------------|--|
| 175-05AK | Custom Oil Tank for Blown Pro Mod, Unwelded |
| 175-05AKW | Custom Oil Tank for Blown Pro Mod, Welded |
| 175-05BK | Oil Tank for Blown Pro Mod - 6" W x 13" D x 16" T, Unwelded |
| 175-05BKW | Oil Tank for Blown Pro Mod - 6" W x 13" D x 16" T, Welded |
| 175-05CK | Oil Tank for Turbo Pro Mod - 8" W x 13" D x 12" T, Unwelded |
| 175-05CKW | Oil Tank for Turbo Pro Mod - 8" W x 13" D x 12" T, Welded |
| 175-05DK | Oil Tank for Turbo Pro Mod - 8" W x 8" D x 12" T, Unwelded |
| 175-05DKW | Oil Tank for Turbo Pro Mod - 8" W x 8" D x 12" T, Welded |
| 175-738 | Oil Tank Preheater w/ Aluminum Bung |
| 175-739K | Pro Mod Fuel and Oil Tank Strap Mount Kit |
| 175-06BK | Puke Tank Drain Kit Large Outlet |
| 175-07AK | Custom Puke Tank for Blown Pro Mod |
| 175-07BK | Puke Tank for Blown Pro Mod - 10" W x 10" D x 8" T |
| 175-07CK | Triangular Pro Mod Puke Tank, Unwelded |
| 175-07CKW | Triangular Pro Mod Puke Tank, Welded |
| 175-742K | Puke Tank Through Chassis Kit |
| 175-734AK | Custom Aluminum Fuel Tank for Blown Pro Mod, Unwelded |
| 175-734AKW | Custom Aluminum Fuel Tank for Blown Pro Mod, Welded |
| 175-734BK | Fuel Tank for Blown Pro Mod - 12" W x 13" D x 16" T, 10 Gal., Unwelded |
| 175-734BKW | Fuel Tank for Blown Pro Mod - 12" W x 13" D x 16" T, 10 Gal., Welded |
| 175-734CK | Fuel Tank for Turbo Pro Mod - 10" W x 13" D x 12" T, 6.75 Gal., Unwelded |
| 175-734CKW | Fuel Tank for Turbo Pro Mod - 10" W x 13" D x 12" T, 6.75 Gal., Welded |
| 175-734DK | Fuel Tank for Turbo Pro Mod - 10" W x 8" D x 12" T, Unwelded |
| 175-734DKW | Fuel Tank for Turbo Pro Mod - 10" W x 8" D x 12" T, Welded |
| 175-09 | Ice Tank for Turbo Cars |
| 175-10 | Billet 5" Water Fill Kit w/ Hardware |
| 175-746K | Breather Hose / Check Valve Kit |
| MCK-7 | Burn Down Tube |



175-07



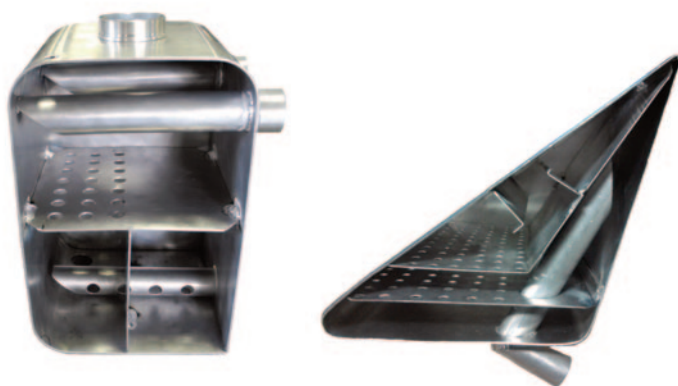
Oil Tank, Welded



175-738

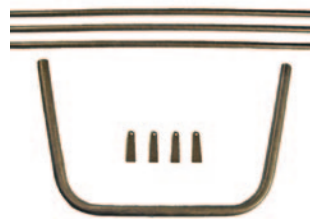


Fuel Tank, Welded



FUEL CELLS

- 175-02 Jaz Fuel Funnel, red
- 175-03 Jaz Fuel Cell Cap Assembly
- 175-04 Jaz Vent / Roll Over Valve
- 175-08K Nerf Bar Kit
- 175-740 Jaz 1-1/2 Gallon Fuel Cell w/ Foam
- 175-741 Jaz 1-1/2 Gallon Fuel Cell w/o Foam
- 175-737 Jaz 1-1/2 or 2 Gallon Fuel Cell Strap Kit
- 175-736 Jaz 2 Gallon Fuel Cell
- 175-710 Jaz 3 Gallon Fuel Cell
- 175-712 Jaz 3 Gallon Fuel Cell Mounting Straps
- 175-713 Jaz 3 Gallon Pro Mod Fuel Cell
- 175-718 Jaz 3 Gallon Pro Stock Fuel Cell
- 175-715 Jaz 4 Gallon Fuel Cell w/ 2 #8 outlets
- 175-717 Jaz 4 Gallon Fuel Cell Mounting Straps
- 175-01 Jaz 5 Gallon Fuel Jug, black (other colors available)
- 175-720 Jaz 5 Gallon Horizontal Fuel Cell
- 175-725 Jaz 8 Gallon Horizontal Fuel Cell
- 175-730 Jaz 16 Gallon Fuel Cell w/ Foam
- 175-731 Jaz 16 Gallon Fuel Cell w/ Sender
- 175-732 Jaz 16 Gallon Fuel Cell w/ Foam and Sender
- 175-735 0-90 OHM Sending Unit 10" to 15" Adjustable
- ATH-05 Fuel Cell Tip Over Valve #8AN



175-08K



175-03



175-02



175-713



175-718



175-720



ATH-05



175-748LWK



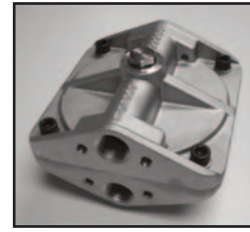
175-749LWK

FUEL PUMPS & ACCESSORIES

- 175-743 Aeromotive 500-2500 hp Gas or 1500 hp Alcohol Pump
- 175-744 Magna Flow ProStar EFI 600 Pump
- 175-745 Magna Flow ProStar 500 Pump w/ Filter
- 175-748K Universal Fuel System Mount Kit
- 175-748LWK Lightweight Universal Fuel System Mount Kit
- 175-749LWK Lightweight Tubular Titanium Universal Fuel System Mount Kit

OIL SYSTEM

- 175-747K Oil Filter w/ Mount Kit
- ATH-09 Oil Filter (Omni, 3/4" NPT Thread)
- ATH-10 System 1 Long Billet Inline Oil Filter #12 AN Ends
- ATH-11 System 1 Mounting Bracket for 2" OD x 9" L Inline Filter
- ATH-12 System 1 Filter Assembly
- ATH-13 Billet Chassis Mount #12 Fittings
- ATH-14 Coarse Screen for Oil Filter ATH-09
- TOR-1 Torco Gear Oil



ATH-09



ATH-12

CHECK VALVE

- PLU-1 3/4" Oil Tank Vent Line Check Valve



PLU-1



ATH-13

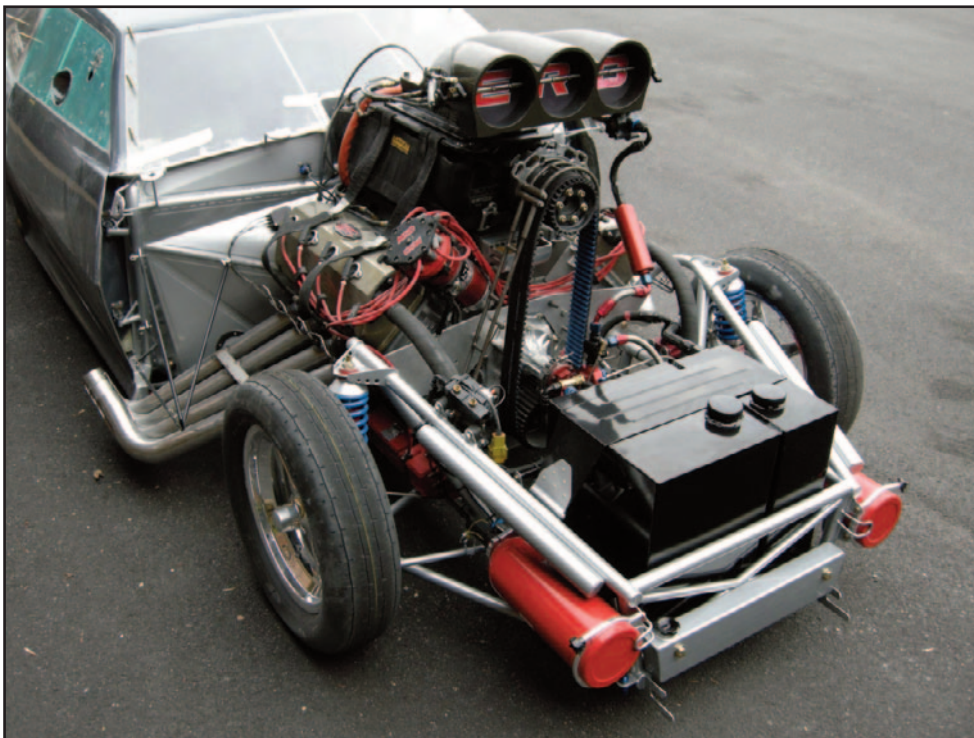
HOSE & CLAMPS

- NY-2 3/4" ID Oil Hose SBF
- NY-15 1" ID Oil Hose SBF
- NY-1 1-1/4" ID Oil Hose SBF
- NY-13 Hose Clamps for 1-1/8" OD Hose
- NY-14 Hose Clamps for 1-3/4" OD Hose
- NY-16 Thermoid Bellowsflex 7910 Vent Hose 3/4" ID
- NY-17 Thermoid Bellowsflex 7910 Vent Hose 1-1/4" ID

SBF = Sold by the foot

BREATHERS

- 1200-92 Hooded Breather
- BAE-01 Breather & Hose Quick Release
- VAN-251A Valve Cover Breather Assembly, pair



1200-92



BAE-01



VAN-251A